

Staunton  
25,948  
People

Warren Faught



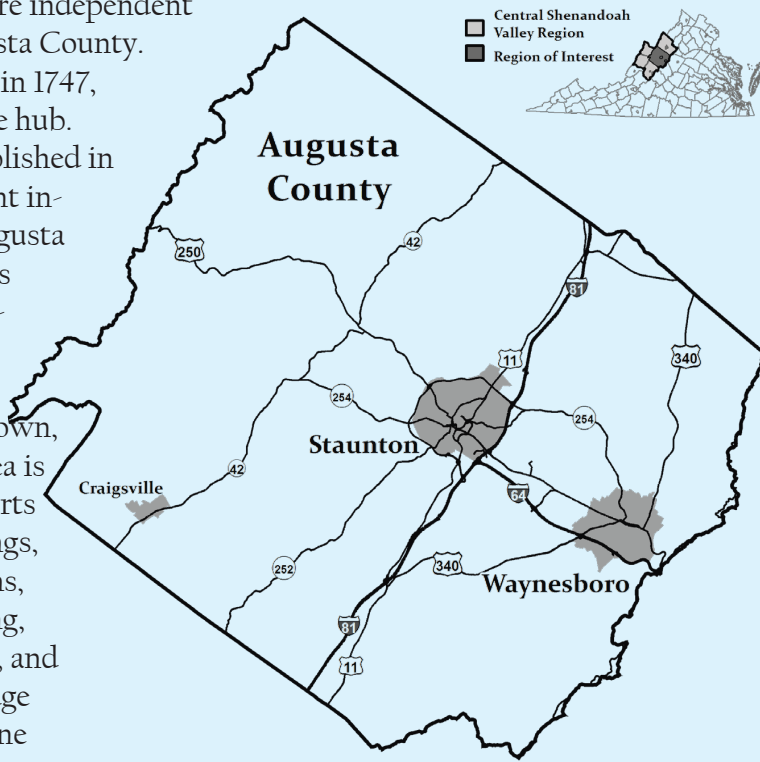
Augusta County  
78,033  
People



Waynesboro  
22,841  
People

The Staunton-Augusta-Waynesboro Metropolitan Statistical Area, home to over 126,000 people, is located in the heart of the Shenandoah Valley. Staunton and Waynesboro are independent cities within Augusta County.

Staunton, founded in 1747, is an arts and culture hub. Waynesboro, established in 1801, is an important industrial center. Augusta County is Virginia's second largest agricultural producing county and has one incorporated town, Craigsville. The area is recognized for its arts and cultural offerings, historic downtowns, farm-to-table dining, outdoor recreation, and the scenic Blue Ridge Parkway and Skyline Drive.



**Recreation:**

Blue Ridge Parkway, George Washington and Jefferson National Forests, Skyline Drive, Shenandoah National Park, Appalachian Trail, Natural Chimneys Park, South River Greenway, Grand Caverns, and the Blue Ridge Tunnel.

**Attractions:**

Frontier Culture Museum of Virginia, Woodrow Wilson Presidential Library and Museum, American Shakespeare Center, Heifetz Music Institute, Shenandoah Valley Art Center, R.R. Smith Center for History and Art, ShenanArts, Waynesboro Players, Oak Grove Theater, Wayne Theatre, Gypsy Hill Park, and the Russell Museum.

2025 Facts & Figures  
Staunton - Augusta County - Waynesboro



Warren Faught

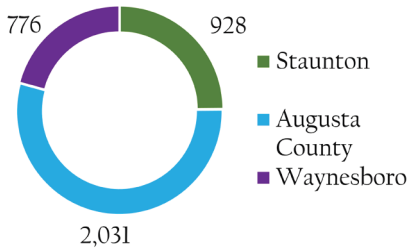
# Jobs People Region

## Median Household Income, 2024

Staunton	\$65,581
Augusta County	\$82,049
Waynesboro	\$59,994

## Top 3 Employment Sectors

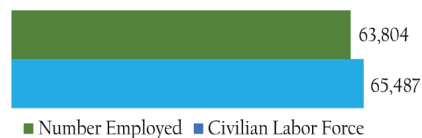
- Education, Health Care & Social Assistance
- Manufacturing
- Retail Trade



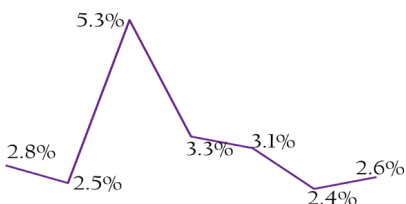
## Higher Education

- Mary Baldwin University, including Murphy Deming College of Health Sciences
- Blue Ridge Community College

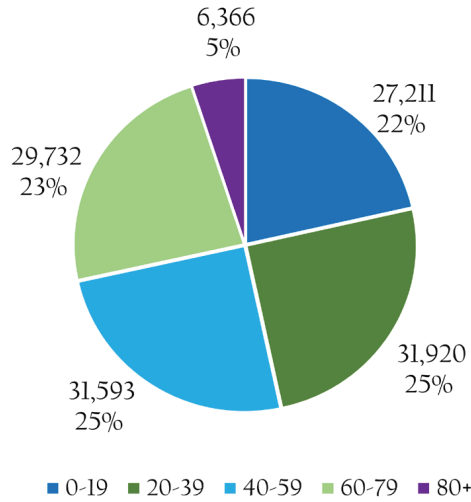
## Labor Force, 2024



## Unemployment Rate, 2018-2024



## Age of Population, 2024



## Population Growth, 2014-2024



## Highest Level Education Attainment, 2024

Locality	High School	Some College/ Associate's	Bachelor's or Higher
Staunton	27.7%	28.5%	37.7%
Augusta County	39.9%	27.0%	25.1%
Waynesboro	35.0%	28.4%	25.7%

## Public Schools, 2024-2025

K-12 Student Enrollment	15,870
High School Graduation Rate	92.4%
Total Graduates and Completers	1,163
Percent of Continuing Education	61.1%

Central Shenandoah Planning District Commission  
[www.cspdc.org](http://www.cspdc.org)  
 (540) 885-5174  
 Staunton VA 24401



## Median Home Value, 2024

Staunton	\$259,200
Augusta County	\$306,100
Waynesboro	\$245,500

## Total Housing Units, 2024

56,018

## Number of Households, 2024

52,233

## Transportation

- Road: Interstates 81 and 64
- Rail: CSX, Norfolk Southern, Shenandoah Valley Railroad, and Amtrak
- Air: Shenandoah Valley Regional Airport and Eagle's Nest Airport
- Port: Virginia Inland Port (85 miles north)

Augusta Health provides healthcare services

800 miles of River  
 45 miles of Interstate  
 1,729 Farms

## Local Government

[www.ci.staunton.va.us](http://www.ci.staunton.va.us)  
[www.co.augusta.va.us](http://www.co.augusta.va.us)  
[www.waynesboro.va.us](http://www.waynesboro.va.us)

Data Sources:  
 Weldon Cooper Center, United States Bureau of Labor Statistics, United States Census Bureau, United States Department of Agriculture, Virginia Department of Education, & Virginia Works